

# Action Plan 2013-2023

NATURAL ENVIRONMENT

PROTECT AND RESTORE OUR BUSHLAND AND WATERWAYS

1. Litter Clean Up

1a. Organise clean up events in identified hotpots

2. Biodiversity

2a. Expand existing or create new Landcare groups to undertake bushland regeneration and creek rehabilitation projects

2b. Encourage residents to create habitat friendly gardens by joining programs such as Council's Habitat for Wildlife

2c. Investigate the possibility of establishing a local or branch native botanical garden

2d. Look at options to discourage illegal motorbike and 4 wheel drive use in bushland

3. Illegal Dumping

3a. Work with Council to eradicate illegal dumping

SUSTAINABLE LIVING

LIVE WITHIN THE LIMITS OF OUR ENVIRONMENT TO MEET THE NEEDS OF TODAY AS WELL AS FUTURE GENERATIONS

4. Community Garden

4a. Establish a community garden to create a hub for growing fruit and vegetables, sharing knowledge and meeting friends

5. Cycleways, Footpaths & Public Transport

5a. Provide input into Council and State Government plans and strategies

5b. Encourage the broader community to cycle, walk or use public transport through activities such as walking school buses and local cycling tours

6. Bulk Purchases of Water & Energy Efficient Items

6a. Organise information sessions and investigate options for the community to undertake bulk purchasing of items such as solar panels

7. Consumption & Waste

7a. Assist Council in educating the community on the proper use of the three bin system, and investigate options for increased public place waste and recycling infrastructure

7b. Organise local swap days and/or repair and reuse workshops

COMMUNITY WELLBEING & PRIDE

FURTHER STRENGTHEN OUR COMMUNITY SPIRIT AND CONNECTIONS BY MAINTAINING AN ACTIVE, ENGAGED, FRIENDLY AND CARING COMMUNITY

8. Emergency Preparedness & Community Resilience

8a. Organise community information sessions or other educational activities about floods and bushfires with Council, and emergency services agencies

8bi. Develop a 'neighbours helping neighbours' program

9. Community Youth Project

9a. Develop a community youth project that is identified and owned by local young people

9b. Work with young people to reduce graffiti incidents through projects such as street art

10. Street Beautification & Heritage

10a. Improve the neighbourhood streetscape through activities such as repainting and restoring the main street shops, street planting and highlighting the neighbourhood's historical places such as the old Holmesville Station

10b. Celebrate the community's unique heritage by holding an event such as an annual bush dance or ball

11. Community Facilities

11a. Inform relevant organisations, such as Council, on the community facilities that need upgrading, and investigate creative and practical uses for unused facilities and land

12. Community Partnerships

12a. Promote, support and work with existing local organisations and groups such as, but not limited to, the West Wallsend High School and Community Museum, Sugar Valley Neighbourhood Centre and the Sugarloaf Action Group to address neighbourhood issues

**Join us!**

We'd love to hear from you! Please contact us if you would like to join the West Wallsend District Sustainable Neighbourhood Group, participate in an upcoming activity or project, share your ideas or simply to find out more. Or you could join us at one of our monthly meetings. If you're lucky there'll be veggies or hot scones!

**Please visit**

[www.sustainableneighbourhoods.org.au/west-wallsend-district](http://www.sustainableneighbourhoods.org.au/west-wallsend-district)

**Please contact**

**Chair** - Phill Howlette - 0447 784 053  
westwallsenddistrictsng@gmail.com

SUS 13010

# West Wallsend District Sustainable Neighbourhood Action Plan

For residents and friends of West Wallsend, Holmesville, Seahampton, Barnsley, Killingworth and O'Donnelltown

## Friendship, fun and getting things done

Lake Macquarie City residents have a strong commitment to their environment and community. In response, Lake Macquarie City Council has established the Sustainable Neighbourhoods Program. The Sustainable Neighbourhoods Program encourages active citizenship by empowering residents to

- protect and care for their environment and place
- reduce resource consumption
- respond effectively to environmental threats
- participate in public life and decision-making.





Residents and friends of West Wallsend, Holmesville, Seahampton, Barnsley, Killingworth and O'Donnelltown joined forces to create the West Wallsend District Sustainable Neighbourhood Group. This Plan documents what we love and value about our community and want to protect or enhance. It identifies opportunities for change and details our community's vision. It outlines how the vision will be achieved through a variety of local community-led projects.

Since December 2012, approximately 200 residents contributed to this Plan through a range of engagement activities including a community survey, a community workshop, information stalls, an online questionnaire, library and shop displays, and stakeholder meetings.

## Our residents value...

- Our neighbourhood's country feel, friendly people and caring community
- The peaceful and quiet setting with a mountain backdrop
- Our local bushland with an abundance of native wildlife, especially birds
- Our local Aboriginal and European heritage
- The neighbourhood's convenient location
- The local sporting facilities

## Did you Know?

- The population of the West Wallsend District Sustainable Neighbourhood is 5,957 (2011 Census)
- The neighbourhood has a younger population and a higher proportion of families compared to the rest of Lake Macquarie (2011 Census)
- Once people move to the area they tend to stay (2011 Census)
- The area is home to an abundance of wildlife including the threatened sooty owl who tends to remain in the same area for life –sooty owls hunt prey as large as rabbits!
- A number of threatened plant species can be found locally including *Grevillea parviflora* subsp. *parviflora*, which is a small flowering shrub mostly found west of the Lake
- West Wallsend is home to the Butterfly Caves – the site was used as a traditional ceremony and meeting place for Awabakal women
- The first colliery in Lake Macquarie was developed in West Wallsend in the 1880s
- Mt Sugarloaf is 412 metres high - on 18 and 19 July 1965, it received 10 centimetres of snow
- Early transport included a double-decker open-top horse drawn bus that ran from West Wallsend to the large shopping hub of Wallsend, as well as a trainline

# Our Vision for a Sustainable West Wallsend District Neighbourhood by 2023



Our streets are clean, beautiful and showcase our people and heritage



Our natural bushland areas and waterways are healthy and teeming with native flora and fauna, and are cared for and enjoyed by local residents



Our community gets together regularly to share ideas and skills



Local businesses are thriving and they are valued by residents and they support the local community



Our homes and lifestyles only leave a small footprint on the environment



All generations have a voice and are actively involved in the community



Places of interest are accessible and people feel safe walking and cycling



Our local facilities are valued and benefit a wide spectrum of the community

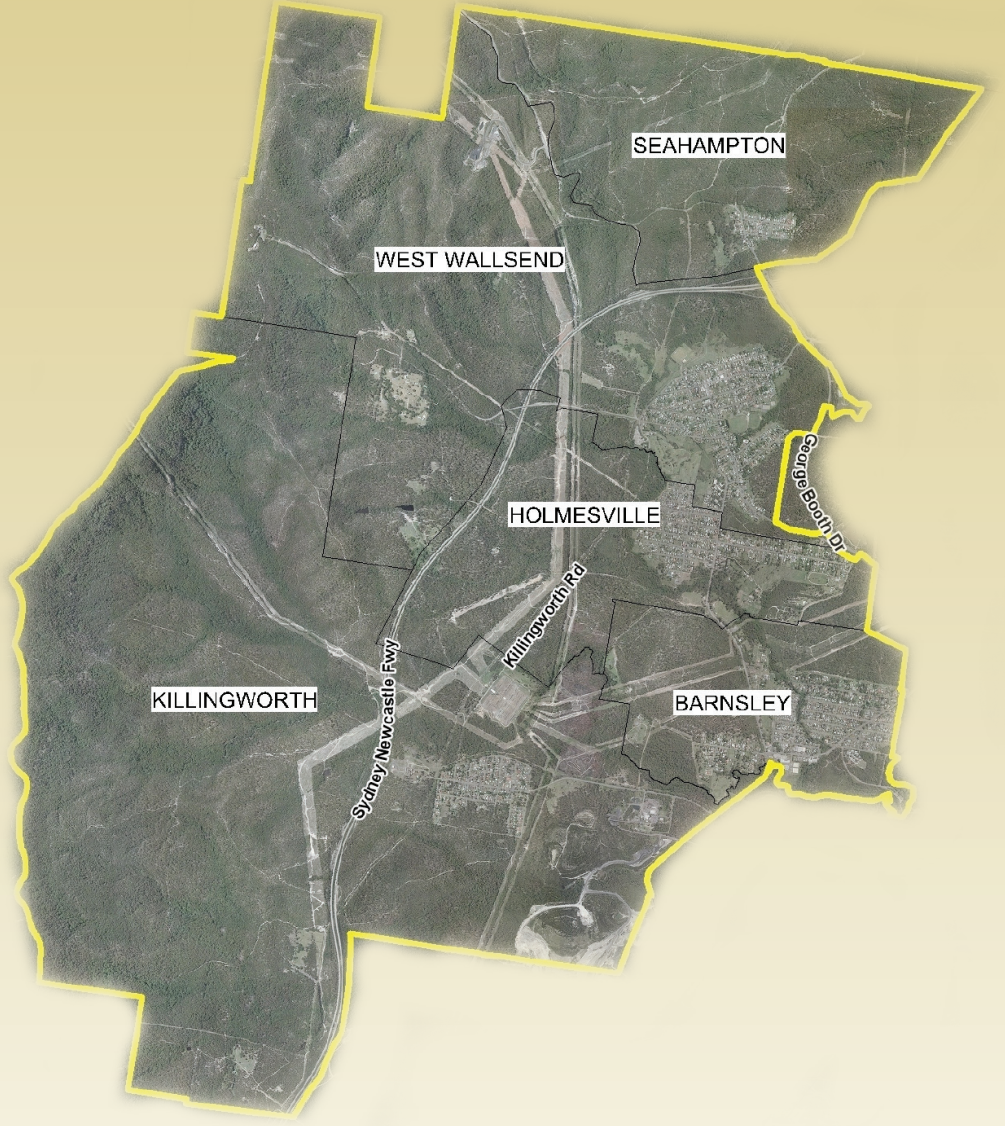


Our people are proud of the neighbourhood and welcome visitors to enjoy the peaceful outlook, village feel and friendly faces



Our community supports each other and is resilient in the face of neighbourhood challenges

*Our community enjoys healthy and beautiful natural areas, first grade community and recreational facilities as well as active citizenship across all generations. We look forward to a prosperous future, while celebrating our rich heritage and retaining the village feel and country atmosphere.*



## Neighbourhood Assets

The West Wallsend District Sustainable Neighbourhood boasts a wide range of natural, built, community and individual assets that can assist with the implementation of this Plan. Some of these assets include Slaty, Flaggy, Cockle and Sandy creeks, Mt Sugarloaf, native bushland, community halls, churches, sporting fields and teams, childcare centres, medical services, local shops, historical hotels and accommodation, playgrounds, primary and secondary schools, the West Wallsend Workers Club, the West Wallsend High School and Community Museum, the Sugarvalley Neighbourhood Centre, community groups and lots of individuals with all kinds of different skills from superb cooks to ecologists.