

# **Growing a Sustainable Edgeworth and Cameron Park**

## **Sustainable Neighbourhood Action Plan**

*Our vision is to create and sustain a safe and friendly community where respect for the environment and each other is a way of life.*

**Developed by residents of Cameron Park and Edgeworth through the Sustainable Neighbourhoods Program.**



Supported by Lake Macquarie City Council and the NSW Government through its Environmental Trust





## Acknowledgement of Country

We acknowledge the Awabakal people, the traditional custodians of our neighbourhood. We pay our respects to elders past, and present. As we come together as a community, to plan for the future and wellbeing of our neighbourhood, we remember this place 'Pambalong' is, was and will always be Aboriginal Land.



# Background

## The Sustainable Neighbourhood Program

### - reducing our ecological footprint neighbourhood by neighbourhood

Lake Macquarie City Council is committed to caring for the local environment and making a fair contribution to a sustainable planet. The Sustainable Neighbourhoods Program is a bottom up approach that enables communities to develop their own neighbourhood action plan, implement actions to reduce their neighbourhood footprint, and increase their neighbourhood's overall wellbeing.

### A Sustainable Neighbourhood for Edgeworth & Cameron Park

The Edgeworth and Cameron Park Sustainable Neighbourhood Group (ECPSNG), consist of local residents, community members and representatives from local schools, groups and businesses that live and/or work in the Edgeworth and Cameron Park neighbourhood. We are passionate about building a respectful, connected and sustainable community where everyone cares for each other, our environment, our culture and lifestyle.

We embrace the principles of inclusiveness, mutual respect, democracy and the sharing of skills and knowledge. New members and partnerships are always welcome.

We developed this plan to inspire, empower, and guide our community to a more sustainable future, one where the social, economic, and environmental challenges are balanced for the greater wellbeing of our local community.

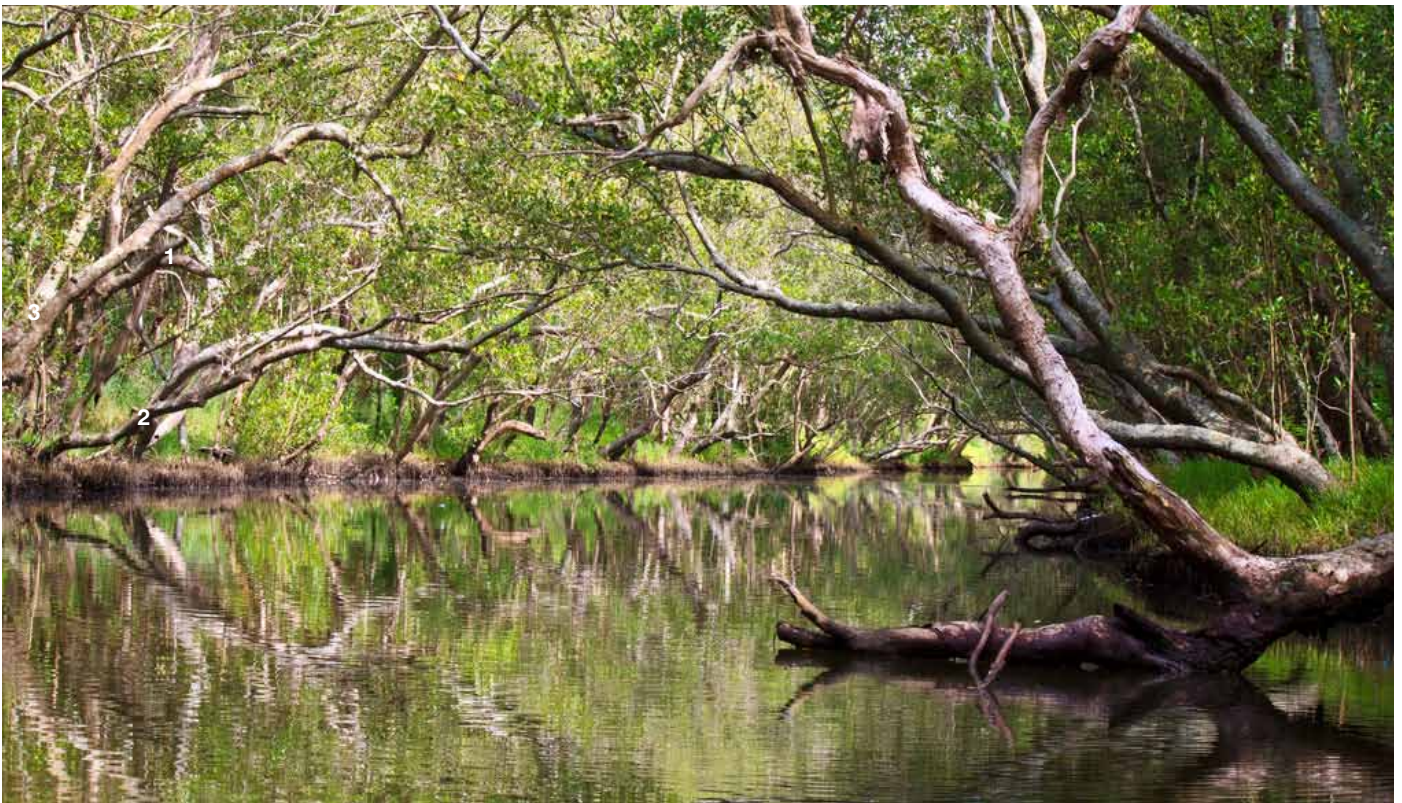


## Creating a Sustainable Neighbourhood Action Plan - Methodology

At the start of 2009, Lake Macquarie City Council began a creek rehabilitation and community celebration program titled Making Connections in Cocked Hat Creek. The main focus of the project was to improve the health of the local catchment and to connect local residents to Cocked Hat Creek and also to each other. Through a series of events and activities, residents have shared their aspirations for their neighbourhood, discussed what they value most, and outlined the various challenges the local community wants to address to create a more vibrant, connected and active neighbourhood.

The launch of Council's Sustainable Neighbourhoods Program, also in 2009, provided an exciting opportunity to join these two initiatives to assist the community to explore what they value about their neighbourhood, develop a vision, and explore ideas for projects that could enhance the local community and improve sustainability practices.

Residents had the opportunity to voice their thoughts and opinions at a variety of community events, activities, and workshops. The information gathered from these activities has been collated, with assistance from members of the ECPSNG, to develop this Sustainable Neighbourhood Action Plan (SNAP). The SNAP is a living document, designed to be reviewed regularly and adapted to meet the changing needs of the community. Most importantly, it is a plan owned by the community that benefits the whole community. The SNAP is not about any one group, it is about networking, collaborating, sharing resources, knowledge, and skills that can make our community prosper, strong and sustainable for current and future generations



The peaceful waters of Cocked Hat Creek downstream from Main Road, Edgeworth



# Our Vision

*Our Vision is to create and sustain a safe and friendly community where respect for the environment and each other is a way of life*

## What we love about our neighbourhood

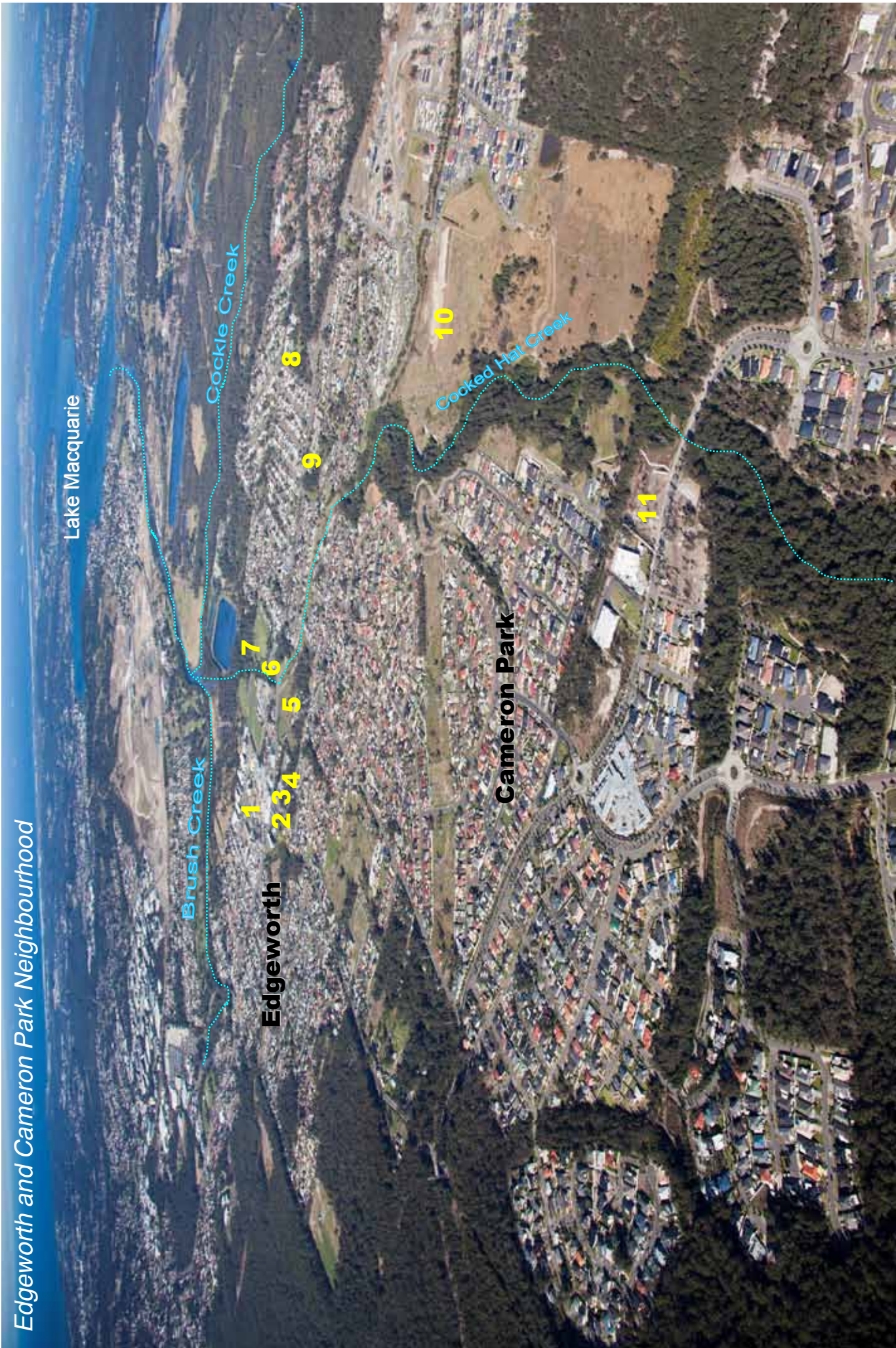
- Affordable place to live close to shops, services and schools
- The area is central to beaches, the Lake, Newcastle and the F3 freeway
- The friendly community
- The outdoor lifestyle, parks and cycleways
- The beauty and peacefulness of the bushland and semi-rural outlooks

## Challenges facing our neighbourhood

- Rapidly changing neighbourhood and population growth
- Keeping our community connected, informed and supported
- Providing activities and services to involve and mentor youth
- Growing a safe and happy community that respects and helps each other
- Sustainable transport and connection to other services
- Litter, vandalism and graffiti
- Stormwater impacts on local creeks and Lake Macquarie







- |                                 |                                    |   |
|---------------------------------|------------------------------------|---|
| 1. Edgeworth Town Centre        | 7. Edgeworth Steam Model Trains    | 10. Future Sporting and Recreational Facilities (including BMX track) |
| 2. Post Office                  | 8. Edgeworth Heights Public School | 11. Cameron Park Community Centre                                     |
| 3. Library                      | 9. St Benedict's Primary School    |   |
| 4. Edgeworth Public School      |                                    |   |
| 5. Hunter Life Education Centre |                                    |   |
| 6. Scout Hall                   |                                    |   |



# Edgeworth & Cameron Sustainable Neighbourhood Group

*Planning Themes 2011 - 2020*

## Strengthening and Connecting our Community

**Our aim:** To build a respectful, connected, and active community that cares for and supports each other, local businesses, community groups, schools, youth and the elderly.

**Outcome:** We are connected, engaged, active, and empowered to work together to improve our community and wellbeing.

Actions		Outcomes
1.1	<b>Conduct regular Sustainable Neighbourhood group meetings</b>	<p>The community develops a strong, representative, respected voice that brings all local groups and residents together to discuss topics and opportunities to share skills, resources and form partnerships.</p> <p>Local neighbourhood projects are supported, networked, and promoted.</p> <p>The community is empowered to express their views and participate in planning and decision-making.</p>
1.2	<b>Communicating Better</b> <ul style="list-style-type: none"> <li>Establish a community noticeboard</li> <li>Establish a community webpage</li> <li>Advertise and promote activities in school newsletters, businesses, media and other personal and professional networks</li> </ul>	<p>Reliable and current sources of locally relevant information on environmental and sustainable living activities and issues are available to the community.</p> <p>There are avenues for local community to stay in touch, informed and meet people with similar interests and ideas.</p> <p>Residents participate in local activities and make changes to reduce their ecological footprint</p>
1.3	<b>Support Local</b> Promote the benefits of supporting and servicing the local community	<p>Local residents shop locally supporting local businesses. Likewise, businesses gain an improved understanding of local demand for goods and services, encouraging residents to shop locally.</p> <p>Reduction in ecological footprint (motor vehicle transport).</p> <p>Edgeworth/Cameron commercial area is a thriving business centre.</p>
1.4	<b>Supporting Each Other</b> Investigate the needs and opportunities to improve support to the elderly, disabled and disadvantaged in the community. E.g. community mini bus, adopt-a-grandparent program.	<p>There are strengthened connections between generations within the community, people feel less isolated and vulnerable, and know that local support is available.</p> <p>The community is resilient and holds a strong sense of community spirit and cooperation</p>
1.5	<b>Craft or Trade Groups</b> Investigate the potential of establishing trade, hobby, or other interests groups.	<p>There is a central meeting point for people to meet, develop, and construct ideas and/or projects.</p> <p>People feel connected, networked and supported.</p> <p>People with similar interests connect with each other, forming friendships, and building a greater sense of community.</p>
1.6	<b>Community Events</b> Investigate opportunities to establish more regular community events e.g. street fêtes, street parties, picnics in the park, Carols by Candlelight, Community day at the Steam Model Trains. Create and promote a local community event calendar.	<p>Community involved in creative celebrations of the neighbourhood.</p> <p>Strengthened connections between residents, community groups, businesses and people know they can rely on their community for friendship and support.</p> <p>Builds a positive perception of the neighbourhood.</p> <p>Builds a greater sense of place in ways that are entertaining, fun and promote the communities greatest assets.</p>

<b>1.7</b>	<b>Build relationships with the local indigenous community</b> Improve the communities understanding of local indigenous culture and history through stories and projects.	There is an increased understanding and appreciation of indigenous culture and social history. There are improved relationships with the local indigenous community.
<b>1.8</b>	<b>Active and Informed Youth</b> Attract and encourage youth to be involved to have better representation in the group about youth issues. Encourage young people to be involved in investigating and establishing a variety of local projects. For example: <ul style="list-style-type: none"> <li>• Youth clubs e.g. chess, science, and Landcare groups;</li> <li>• Local drop-in-centre;</li> <li>• Career nights/mentoring;</li> <li>• Local talent show;</li> <li>• Mural or artwork space;</li> <li>• Winter sleepout;</li> <li>• Interschool activities e.g. sport, dancing, art, BMX competitions.</li> </ul>	Local youth are represented and have a voice about the future of their neighbourhood. Young people are engaged, active and feel supported by local services, facilities, and neighbours helping to build respect and understanding between generations in the community
<b>1.9</b>	<b>Community Wellbeing Initiatives</b> Explore opportunities that will promote the overall wellbeing of the local community. For example: <ul style="list-style-type: none"> <li>• Anti-graffiti &amp; vandalism campaign,</li> <li>• Litter campaign</li> <li>• Neighbourhood watch,</li> <li>• “Get to know your neighbour” day,</li> <li>• Increased police patrols,</li> <li>• Off-road vehicle management,</li> <li>• “Tell us what you think” day and</li> <li>• Fire education (home and bushfire safety).</li> </ul>	Strengthened connections between residents, community groups, businesses and people know they can rely on them for friendship and support. Encourages a positive perception of the neighbourhood to the community and visitors. Encourages active citizenship



## Living Sustainably

**Our aim:** To encourage and enable residents and businesses to live more sustainably.

**Outcome:** We take personal actions to make our households and businesses more sustainable. Supporting local businesses and services, reducing waste, energy and water consumption, buying locally made or handmade goods, repairing, sharing skills and resources.

Actions		Outcomes
<b>2.0</b>	<b>Community Garden</b> Investigate the creation of shared community space for growing and learning about edible gardening	There is a vibrant, productive community run garden, where people interested in edible food, community and gardening can meet, eat, grow, and share healthy fresh food.
<b>2.1</b>	<b>Sharing Network and Events</b> Investigate the potential for a sharing network encouraging people to meet, greet, and share (knowledge, food, skills or items). For example: online network, swap parties	Residents share resources, transfer of skills and knowledge and opportunities for neighbours to get to know each other. People feel supported, networked and connected. People are encouraged to participate in local activities and make changes to reduce their ecological footprint.
<b>2.2</b>	<b>Promote Walking</b> Investigate ways to promote the use of local footpaths and cycleways including walking school buses to and from schools	Residents enjoy a healthy lifestyle, explore of the neighbourhood and get to know their neighbours. Reduces residents ecological footprint.
<b>2.3</b>	<b>Car Pooling</b> Promote and encourage car pooling.	People share transport and make changes to reduce their ecological footprint.
<b>2.4</b>	<b>Cycleways</b> Lobby for safer cycle routes/paths away from traffic or widening of roads/footpaths that explore bushland and Cocked Hat Creek and link to other existing cycleways and town centre	Residents enjoy an active and healthy lifestyle while exploring their neighbourhood and bushland areas. Provides an alternative transport option to move about the neighbourhood.
<b>2.5</b>	<b>Transport Focus Group</b> Establish a transport focus group that will explore and lobby on transportation and traffic issues including: bus route and service improvements, traffic congestion, connection to other services, transport pollution, Glendale Interchange progress, school bus drop-off and pick-up zones, alternative fuel and vehicle options.	The community has a representative voice to lobby for improvements in local transport issues that will contribute to improved community wellbeing, safety, efficiently, resource use and pollution
<b>2.6</b>	<b>Living Sustainably Workshops and Information Sessions</b> Investigate the demand for and opportunities to hold a range of workshops or information sessions on topics such as solar energy, waste minimisation, recycling, composting, worm farming, saving energy native and permaculture gardening	The community has a representative voice to lobby for improvements in local transport issues that will contribute to improved community wellbeing, safety, efficiently, resource use and pollution

## Caring for our Parks and Bushland

**Our aim:** To protect and care for our waterways, parklands, bushland and wildlife. To respect and care for our areas of indigenous and European cultural significance.

**Outcome:** We care about the natural and cultural values of our neighbourhood. We understand the threats and risks affecting the health of our environment. We take action to protect, repair, and maintain the health of our creeks, bushland and Lake Macquarie.



Actions		Outcomes
<b>3.0</b>	<b>Landcare</b> Promote greater active participation in local Landcare initiatives and establish a local Landcare group(s).	An active Landcare group. The natural values of local waterways and natural bushland to ensure they are protected and maintained. There is a strengthened sense of pride and connection to the area's natural bushland and waterways and a recognition that everyone's actions in the catchment also impact on the health of Lake Macquarie. Residents understand the threats to the environment and take steps to protect and care for, their local environment.
<b>3.1</b>	<b>Waterwatch Monitoring</b> Continue the monitoring of local waterways through the Waterwatch program	Support local Waterwatch teams and encourage them to regularly report back their findings to the community. A greater understanding of waterway health and how actions in the catchment can impact water quality and the health of local streams and the Lake.
<b>3.2</b>	<b>Adventure Activities</b> Investigate opportunities to hold adventure activities	A community that is active and values their natural bushland and open space areas. Provides an opportunity for residents to explore and learn about their natural bushland areas and the importance of urban habitat
<b>3.3</b>	<b>Valuing our parks and bushland</b> Investigate ways to engage with Council to prioritise work in local parks, including work on BBQs, play equipment, seating, bridges, fencing. Create a map or brochure of the areas natural features and parkland for residents, visitors and new residents	A community that values and recognises areas that provide important natural, recreational, and social spaces for the community to spend time, explore and celebrate. Residents appreciate and care about their natural and cultural environment. Residents understand the threats to the environment and take steps to protect and care for, their local environment
<b>3.4</b>	<b>Clean Up Australia Day</b> Establish sites and participate in Clean Up Australia Day	The neighbourhood is clean and free of litter and there are regular clean ups. There is no illegal dumping. There is increased use of, and pride in, the local area.



# Do you have any ideas for your neighbourhood?

*We need you!*

You are invited to be part of the Edgeworth and Cameron Park Sustainable Neighbourhood Group. We need people of with different skills and knowledge to assist implementing the projects outlined in the plan. You can become a coordinator, project leader or project volunteer: your level of involvement is up to you.

Be part of something positive; find out about our current projects and activities and how you can be part of this fantastic initiative.

We meet the second Wednesday of every month at the Edgeworth Memorial Neighbourhood Centre on the corner of Minmi and Main Roads, Edgeworth from 5.30 – 7pm.

New members are always welcome. Please contact Peter to join the mailing list.

## Contact:

Peter Tarjanyi: 0427 909 016

Edgeworth and Cameron Park Sustainable Neighbourhood Group

Or

Lake Macquarie City Council on 4921 0333 or [www.lakemac.nsw.gov.au](http://www.lakemac.nsw.gov.au)

## Acknowledgement and thanks to:

Edgeworth Neighbourhood Memorial Centre

Cameron Park Community Centre

Northlakes Community Association

Northlakes Christian Church

1st Edgeworth Scouts

Newcastle Permanent (Edgeworth Branch)

Lions Club

Edgeworth Town Mall

Edgeworth Public School

St Benedict's Primary School

Hunter Life Education Centre

Edgeworth Meat and More

and all the residents and members of the ECPSNG who have so generously shared their time and knowledge in the development of this plan.

*"Maybe we can do only small things,  
but together we might be able to  
make a bigger difference"*

Local Resident



This project has been assisted by the New South Wales Government through its Environment Trust



Lake Macquarie  
City Council

