

Dudley Sustainable Neighbourhood Action Plan

Developed by Dudley residents, through the
Dudley Sustainable Neighbourhood Group.



Contents

1.	Background.....	3
1.1.	The Lake Macquarie Sustainable Neighbourhood Program	3
1.2.	The Dudley Sustainable Neighbourhood Initiative	3
1.3.	The Dudley Sustainable Neighbourhood Group.....	3
2.	About Dudley.....	4
2.1.	Our Place	4
2.2.	Dudley's Population	5
3.	Our Vision for a Sustainable Dudley	5
4.	What we value about Dudley	5
5.	Assets in Dudley	6
5.1.	Asset Map	6
	Connecting our assets and vision	6
6.	Community Projects	7
6.1.	Dudley Streetscape Community Masterplan	7
6.2.	Dudley Community Garden	8
6.3.	Dudley Mural	8
6.4.	Skate Park and Activity Hub	9
6.5.	Communications, Coordination and Engagement.....	10
6.6.	Dudley Spur Line Shared Pathway.....	10
6.7.	Banksia Ave Walking Track	11
6.8.	Increase walking, cycling and public transport usage	11
6.9.	Dudley Landcare – War on Weeds.....	12
6.10.	Rock Platform Protection.....	13
6.11.	Ecosystem protection	13
6.12.	Bushfire Management / Preparing for Bushfire	14
6.13.	Ban the Bag Campaign	14
6.14.	Reduce household waste	15
6.15.	Reduce energy usage in Dudley / Increase uptake of renewable energy sources	15
6.16.	Reduce potable water use.....	16

Contact us

Dudley Sustainable Neighbourhood Group

www.sustainableneighbourhoods.org.au/dudley.html

Sustainable Neighbourhoods is a program of Lake Macquarie City Council to support our community.

For more information, contact Lake Macquarie City Council on 02 4921 0333.



The Dudley Sustainable Neighbourhood project is supported with assistance from the New South Wales Government through its Environmental Trust.

1. Background

1.1 The Lake Macquarie Sustainable Neighbourhoods Program

The Sustainable Neighbourhoods Program is about residents taking responsibility to ensure their unique environment and community remains sustainable for future generations. An initiative of Lake Macquarie City Council, the Sustainable Neighbourhoods Program encourages residents to plan and promote local action; enhance and protect their natural environment; reduce their ecological footprint; and increase community connectivity and resilience.

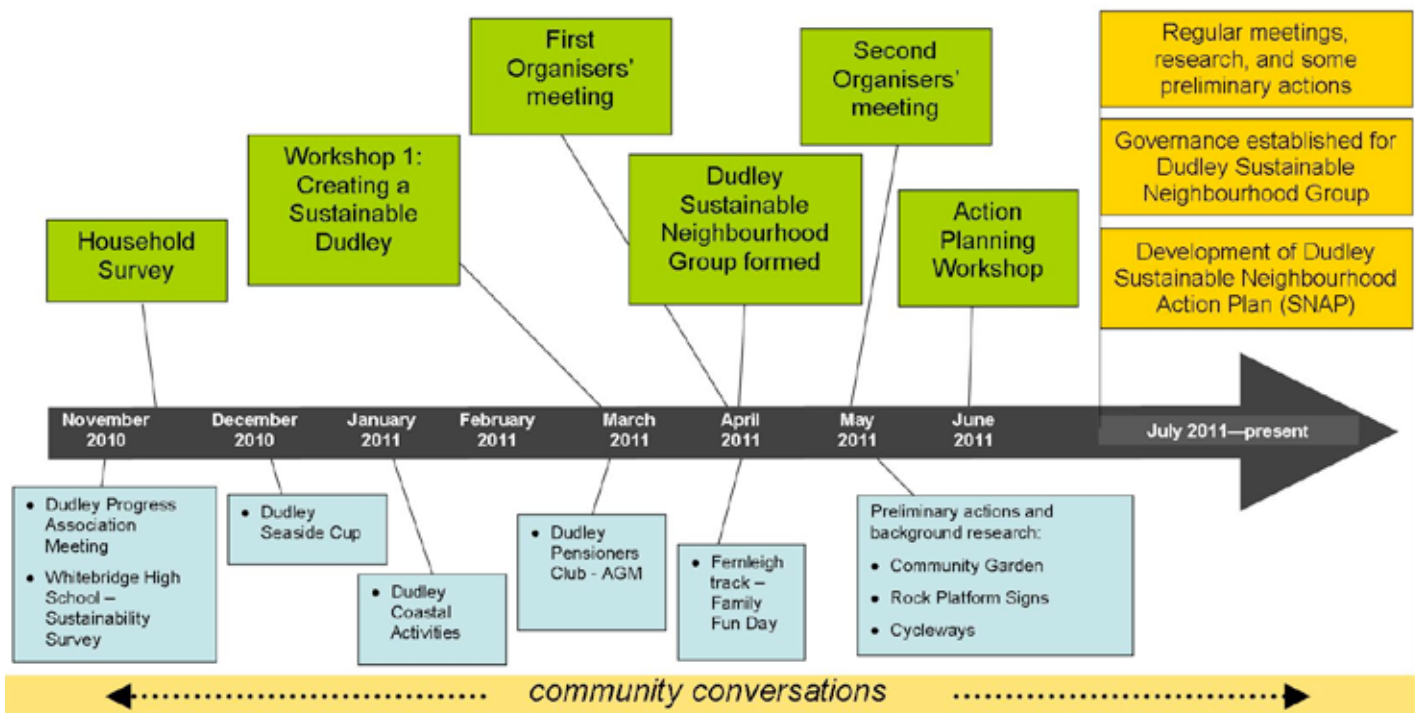
The Sustainable Neighbourhoods Program enables residents to develop a vision for their neighbourhood, identify local values, uncover neighbourhood assets, and develop a Sustainable Neighbourhood Action Plan (SNAP) to address neighbourhood challenges.

1.2. The Dudley Sustainable Neighbourhood Initiative

Dudley residents have embraced the Sustainable Neighbourhoods Program and worked with Council to conduct a series of community engagement activities within the Dudley community. These activities generated content for the development of the Dudley Sustainable Neighbourhood Action Plan (SNAP).

This SNAP is a living document that outlines our community's vision and a variety of projects to create a sustainable neighbourhood in Dudley over the long term. The Dudley Sustainable Neighbourhood Group is committed to implementing this SNAP, and to reviewing and updating it on an annual basis.

Summary of community engagement activities



1.3. The Dudley Sustainable Neighbourhood Group

The Dudley Sustainable Neighbourhood Group welcomes all residents of Dudley, and those who identify closely with the neighbourhood, who would like to work together to achieve our vision and objectives. Our group is governed by a Coordinating Committee, made up of office bearers, and project team representatives.

We meet regularly and keep in email contact, to review our progress, discuss and plan our projects and activities, and ensure we're making the best of the many opportunities and assets available to us. We welcome new members to participate and help plan our projects. Find out about our current projects and activities by checking our noticeboard at the Dudley Shop, 122 Ocean St, Dudley, or at www.sustainableneighbourhoods.org.au/dudley.html.

2. About Dudley

2.1 Our Place



Dudley, the traditional land of the Awabakal people, is a coastal suburb located in the City of Lake Macquarie, NSW, Australia. Coal mining in the Burwood and Dudley Collieries, in what is now Glenrock State Conservation Area, originally drew settlement to the immediate area in the late 1800s. The Dudley Colliery was closed and demolished in 1940.

Dudley is a desirable residential suburb, with a village atmosphere and strong community spirit. Local shops provide for basic conveniences, and residents enjoy being close to Whitebridge shops, the large urban centres of Charlestown and Newcastle, and to Whitebridge High School and Dudley Primary School. Dudley contains a unique blend of iconic community and social facilities that residents value. The Pensioners' Hall, heritage hotels, Dudley War memorial, urban parks and sporting fields are treasured as unique assets of Dudley village, reflecting our history and strengthening the connections we have to our suburb and to each other.

Dudley is surrounded by a magnificent coastline to the east, and high quality bushland to the north and south, including the Glenrock State Conservation Area and the Awabakal Nature Reserve. This bushland provides a significant patch of green in an otherwise urban environment, and an important habitat corridor, linking Glenrock, Awabakal, and other nearby bushland such as the Belmont Wetlands.

Surrounding bushland is recognised as a significant natural asset in the region and includes outstanding vegetation

communities and diversity, including two endangered ecological communities (Littoral Rainforest, and Permian Coastal Clay Grassland) and five threatened flora species.

Glenrock State Conservation Area is recognised as one of the top five conservation reserves in the Sydney basin, in relation to the floristic diversity it contains.

Dudley environs include areas that are considered to be a cultural landscape of State Heritage Significance, and contain several Aboriginal and historic sites of great interest.

The headlands and rock platforms around Dudley contain an important and accessible record of over 300 million years of geological history.

2.2. Dudley's Population

Dudley is currently home to approximately 2240 residents living in 830 households.

Dudley residents come from diverse socio-economic backgrounds, but in general, Dudley residents have relatively high incomes, low unemployment, high level of education, high proportion of professionals, and home ownership. Once people live in Dudley they tend to stay. Residents have a high rate of volunteering, and low levels of need for assistance compared to other neighbourhoods in Lake Macquarie City.

Dudley residents are well connected to each other, recognise a strong community spirit, and have a history of active citizenship.

3. Our Vision for a Sustainable Dudley

"A village of well connected and empowered citizens, where we respect the unique cultural heritage of our village; enjoy and protect our spectacular coastal natural environments, and where we excel at minimising our use of non-renewable resources."

The Dudley Sustainable Neighbourhood Group will strive to achieve our vision by collaborating with fellow neighbours to implement, and regularly review the Dudley (SNAP).

4. What we value about Dudley

Dudley residents value:

- Dudley's beautiful natural environments (bushland, beach, coast and marine), and their importance for biodiversity, wildlife, and recreation.
- Our friendly, well-connected community.
- Dudley's village atmosphere and peace and quiet, while having access to nearby facilities.
- Dudley's village character, supported by community and social facilities such as the Pensioners' Hall, local shops, heritage hotels, open space and parklands, and the blend of old and new homes, all of which are enveloped by bushland reserves of immense beauty and conservation value.



Exploring Dudley beach



Awabakal Nature Reserve

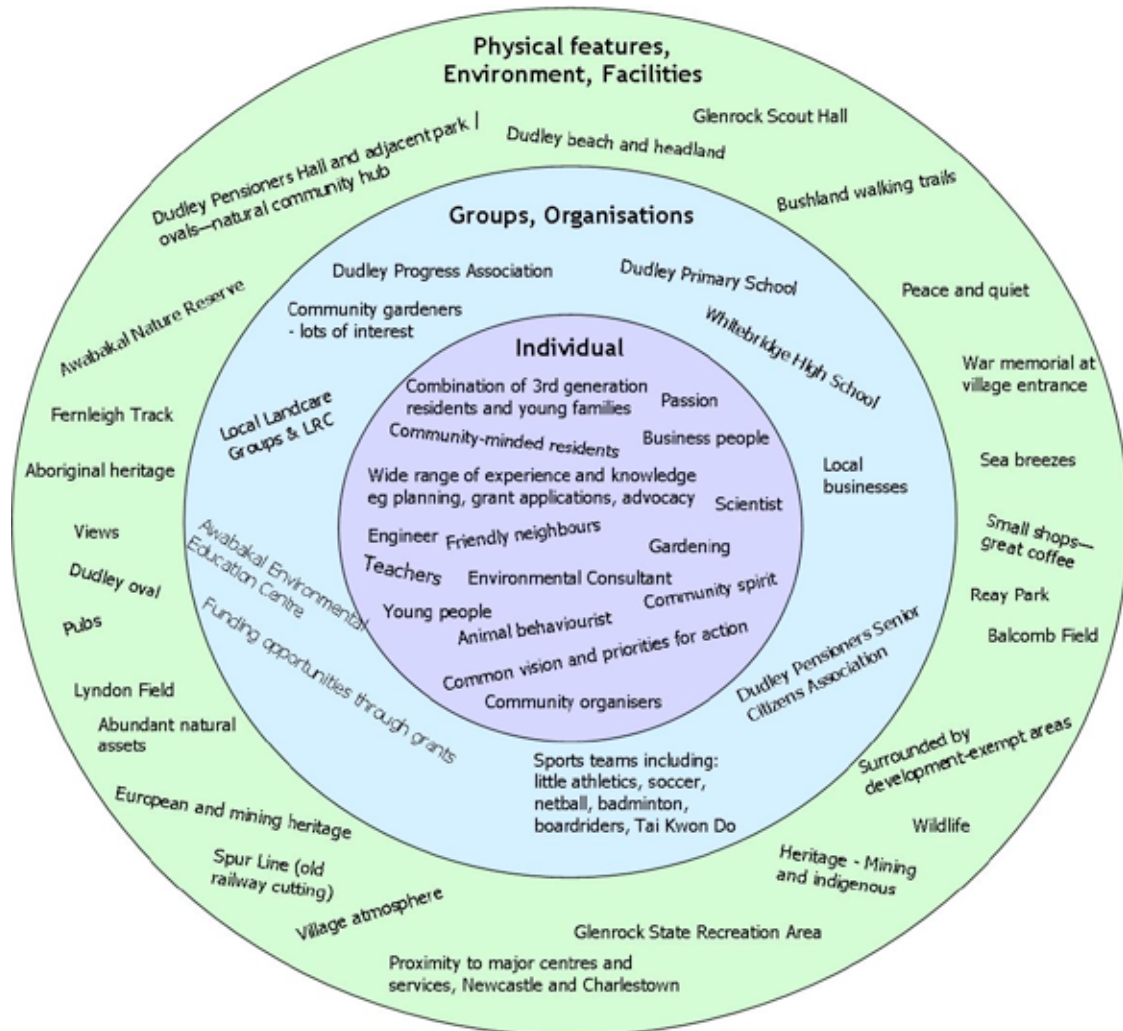


Exploring the Dudley rock platform

5. Assets in Dudley

5.1. Asset Map

The Dudley community is rich in a range of community, and physical assets that we can draw upon to achieve our vision for sustainability. This map below highlights some of our most important assets.



Connecting our assets and vision:

- The Pensioners' Hall and surrounding parkland and shops could become a 'Village Green', integrating a community garden, community recycling opportunities, local markets, and community gathering place.
- Our community includes people with a wide range of expertise, experience, knowledge and skills to lead and assist with our projects (eg planning, grant applications, advocacy).
- The existing Spur Line link to the Fernleigh Track is an opportunity for relatively easy walking and cycling connection to Dudley.
- Dudley Primary School is centrally located and is an idea place to foster community connections.
- A range of existing community gardens in surrounding region can provide support, and working models for us to learn from.
- Our community has a strong history of community advocacy. For example, the continuation of the local bus service is an example of the community working together to achieve our common objectives.

6. Community Projects

Theme 1: A Village Hub

Objective: Create a vibrant village hub where neighbours can socialise, play, learn, share, and celebrate

6.1 Dudley Streetscape Community Masterplan

AIM: Create a cohesive community vision to inform future streetscape improvements in Dudley, and integrate a range of community aspirations, including:

- Accentuate and strengthen the village hub, creating a node around the local shops and central retail precinct by delivering public domain enhancements including customised “Dudley” village street name blades, heritage furniture (seats, planter boxes), bike racks, paving treatments etc;
- Minimise conflicts between pedestrians and vehicles on Ocean Street through tailored street calming devices, and improving pedestrian, disabled, and cycle access (eg increasing pedestrian safety, access to shops, beaches and schools);
- Other general streetscape improvements such as native street trees and plantings; and
- Revitalising local business shopfronts.

Actions	Outcomes
Engage broad involvement from residents, including various related project teams	<ul style="list-style-type: none"> • Community cohesion and support
Agree on scope of community masterplan (eg land area, objectives etc	<ul style="list-style-type: none"> • Clear goals and objectives identified
Hold a community walk and talk / audit to gather ideas and input	<ul style="list-style-type: none"> • Community cohesion and support • Diverse ideas and viewpoints considered
Develop a draft community masterplan for feedback from residents	<ul style="list-style-type: none"> • Community cohesion and support • Diverse ideas and viewpoints considered
Finalise community masterplan and present to Council for future consideration	<ul style="list-style-type: none"> • United community vision
Engage with Council to improve facilities and public amenity at Reay Park	<ul style="list-style-type: none"> • Reay Park is a valued community asset



Sustainable Neighbourhood Workshop, June 2011



Dudley Senior Citizens Hall



Frank Watkins Memorial Park

6.2 Dudley Community Garden

AIMS: To create a shared community garden in Dudley:

- where people can meet, work, learn and share together;
- to improve local sustainability by producing our own food, and developing our gardening skills; and
- to provide local education opportunities about local / organic food production, waste minimisation, and nutrition.

Actions	Outcomes
Talk with and tour existing community gardens and other related groups.	• Informed decision-making
Establish some operating principles (eg organic, shared, objectives, governance)	• Community cohesion and support
Scope and secure a site	• Land tenure secured
Scope and secure funding sources	• Funding available
Develop garden design (considering aspects such as: storage, security, composting, space to meet/gather/education, water, flowers)	• Garden able to meet community objectives
Secure necessary insurance	• Legal requirements satisfied
Develop a draft community masterplan for feedback from residents	• Community cohesion and support • Diverse ideas and viewpoints considered
Explore opportunities to collaborate with Dudley Public School, Dudley Pensioners Hall, Redhead Sustainable Neighbourhood Group etc	• Share project benefits and resources

6.3. Dudley Mural

AIMS: Create a mural on the corner of Ocean and Boundary Streets that will:

- reflect the essence of Dudley (history, natural beauty, and community spirit), and be visually welcoming;
- engage our community in design and production;
- appeal to young people;
- increase the perception of safety in Dudley; and
- reduce tagging.

Actions	Outcomes
Obtain building owners consent, in principal, and for final design	• Permission to proceed
Source funding	• Materials obtained
Develop detailed project plan and timeline (eg materials, wall preparation, actual painting, graffiti proofing)	• Clear project plan to proceed
Engage community to assist with painting	• Achieve project aims
Develop and implement monitoring and maintenance plan	• Mural remains a positive community asset



6.4. Skate Park and Activity Hub

AIMS: Create a multipurpose outdoor activity centre, to provide:

- a local meeting place for 7-16 year olds, that can also accommodate younger children (eg scooters, roller blades, ball games);
- a shared place for families to gather (eg for picnics);
- an increased sense of safety in Dudley;
- an increased sense of ownership and community pride; and
- a deterrent to late night parties.

Actions	Outcomes
Investigate similar facilities (how did they facilitate; construction materials)	<ul style="list-style-type: none"> • Increased understanding of potential design, process and construction
Identify and consult with stakeholders	<ul style="list-style-type: none"> • Community cohesion and support
Engage with Council to scope and secure a site, initiate planning and obtain permission to proceed	<ul style="list-style-type: none"> • Cooperation with Council and other stakeholders to plan
Investigate funding sources (could be staged)	<ul style="list-style-type: none"> • Increase planning priority • Funds acquired for project
Develop park design, considering young people, competitions, seating, landscaping, access to water etc	<ul style="list-style-type: none"> • Cooperation with Council and other stakeholders to plan
Develop marketing and maintenance strategy (eg signage, safety, maintain interest)	<ul style="list-style-type: none"> • Activity hub remains a well utilised community asset
Name activity hub (to connect with culture, historical, mines, indigenous, war memorial)	<ul style="list-style-type: none"> • Community connection with the activity hub
Develop a website (Dudley skate.com), events and activities (eg local competitions) to sustain interest and usage	<ul style="list-style-type: none"> • Activity hub remains a well utilised community asset



Ocean St, Dudley



Awabakal Nature Reserve



Powerful Owl
Photo: Julian Robinson



Dudley rock platform

6.5. Communications, Coordination and Engagement

AIMS: Create avenues for information dissemination and communication of events, meetings and general community notices for an informed and connected local community. Avenues include:

- Internet site;
- Community noticeboard;
- Regular social, street events (eg BBQ, pizza oven, picnics, performances);
- Engaging young people;
- Fundraising;
- Local markets; and
- Men's Shed.

Actions	Outcomes
Nominate a website editor to maintain and update Dudley Sustainable Neighbourhood website	<ul style="list-style-type: none"> • Central point of accessible and current information
Maintain community noticeboard at the Dudley 'Stop and Go'	<ul style="list-style-type: none"> • Community avenue for information distribution is established
Social events project team to form, organise regular events	<ul style="list-style-type: none"> • Regular events of interest attract all kinds of locals
Fundraising committee to form and investigate funding opportunities, grants, sponsorships etc	<ul style="list-style-type: none"> • Funds are secured in advance anticipation of projects occurring • Projects can commence with all requirements funded
Meet to discuss parameters of hosting local markets	<ul style="list-style-type: none"> • Local community are regularly engaged with each other and sustainable neighbourhood group
Investigate options to start a Mens Shed, potentially in collaboration with other nearby projects in Windale, Redhead and Kahibah	<ul style="list-style-type: none"> • A Men's Shed group meets regularly at suitable premises

Theme 2: Encouraging Active Transport

Objective: Encourage Dudley residents to use active transport such as cycling, walking, carpooling, and catching the bus

6.6 Dudley Spur Line Shared Pathway

AIMS: Create a shared pathway along the Old Rail Spur Line to:

- Facilitate walking, cycling, and disability access in and out of Dudley;
- Create a safe link between schools at Dudley and Whitebridge; and
- Connect the Fernleigh Track to Dudley.

Actions	Outcomes
Initiate Landcare works to improve the quality of the habitat corridor along the Spur Line	<ul style="list-style-type: none"> • Improved biodiversity and habitat along Spur Line
Develop community vision for character of shared pathway, and possible interpretive elements (eg signage, vintage mining machinery)	<ul style="list-style-type: none"> • A visually pleasing and functional shared pathway is used by all age groups in the community
Engage with Council to progress pathway planning, permission and assessments	<ul style="list-style-type: none"> • Council and community collaboration
Seek funding	<ul style="list-style-type: none"> • Required funding for project available
Engage with residents living adjacent to Spur Line to address a range of concerns	<ul style="list-style-type: none"> • Community cohesion and support

6.7 Banksia Ave Walking Track

AIMS: Create a walking track at the end of Banksia Ave to:

- Improve safety, amenity, and community access to Glenrock;
- Encourage healthier lifestyles (walking and cycling); and
- Improve biodiversity and control erosion.

Actions	Outcomes
Gain and demonstrate community support (letterbox drop, community petition)	• Community cohesion and support
Create links and gain support from local shops, school etc	• Community cohesion and support
Engage with Landcare, Council, and NPWS for support for planning	• Planning permission and support
Seek funding	• Funding for all parameters of the project is secured.

6.8 Increase walking, cycling and public transport usage

AIM: Increase the share of non-car related trips into and out of Dudley.

Actions	Outcomes
Work with Council to improve bus stop infrastructure (all weather waiting sheds)	• Increased usage of bus services
Adopt measures to increase cycle commuting (Dudley shared paths through the spur line; bike racks at the Dudley village hub)	• Increased cycle commuting trips in and out of Dudley
Encourage kids to walk to school	• Local school students enjoy walking safely to and from school
Improve public transport services and connections <ul style="list-style-type: none"> • Create / improve connections to Newcastle, hospital and university • Small bus public transport system • Underground train service, light rail • Electric scooters with recharge stations 	• Increased usage of local public transport options



Dudley Cyclists



Sustainable Neighbourhood Workshop, March 2011



Dudley Coastal Activity, January 2011

Theme 3: Caring for our Natural Environment

Objective: Protect and enhance our spectacular natural environments, including bushland, beaches, waterways, and marine environments and natural processes, in local reserves, and in our own backyards

6.9 Dudley Landcare – War on Weeds

AIMS: Undertake Landcare works to:

- Improve the biodiversity and habitat values of our local natural environments;
- Maintain and create local habitat and regional habitat corridors for local wildlife; and
- Protect and enhance water quality, local hydrology, soil health, and ecosystem functioning.

Actions	Outcomes
Identify priority Landcare sites in Dudley, including: <ul style="list-style-type: none">• Dudley Bluff• Golburn / Debs Pde• Dudley Spur Line (Railway St)• Ivy St	<ul style="list-style-type: none">• Landcare sites are prioritised according to community values and rehabilitation strategy
Engage with Landcare Resource Centre to undertake Team Leader Training, and develop an Agreed Action Plan for each Landcare site	<ul style="list-style-type: none">• Landcare Groups operate safely and within Landcare guidelines
Undertake bush regeneration, planting, weeding and education activities as set out in the Agreed Action Plans for each Landcare site	<ul style="list-style-type: none">• Improvements to biodiversity, habitat and ecosystem function
Assist with coordination of different Landcare opportunities by establishing a Dudley Landcare Volunteer Team and contact list	<ul style="list-style-type: none">• Landcare activities are well attended and coordinated



Glenrock State
Conservation Area



Sustainable Neighbourhood
Workshop, June 2011



Glenrock Lagoon
photo: A. Gleeson



Exploring Dudley beach

6.10 Rock Platform Protection

AIM: Protect flora and fauna on Dudley's rock platforms through education and enforcement.

Actions	Outcomes
Collaborate with Fisheries to install signage indicating NSW Fisheries Bag Limits and enforcement warnings	<ul style="list-style-type: none"> • Protect rock platform fauna from overharvesting • Rock platforms teeming with marine life, large specimens
Raise community awareness of bag limit enforcement opportunities	<ul style="list-style-type: none"> • Community able to assist Fisheries with enforcement

6.11 Ecosystem Protection

AIMS: Protect flora and fauna biodiversity in Dudley's bush reserves and public land through education, enforcement and positive action.

Actions	Outcomes
Engage with Council and other agencies to install constructed wetlands (SQIDs) at appropriate locations	<ul style="list-style-type: none"> • Improved stormwater management
Join wider community efforts to campaign against drilling for oil or gas in the region	<ul style="list-style-type: none"> • A strong campaign is heard by key decision-makers
Encourage local pet owners to be responsible regarding: <ul style="list-style-type: none"> • picking up excrement • national parks 	<ul style="list-style-type: none"> • Pet owners pick up droppings – local area and public amenities are free from pet waste • Residents respect and adhere to regulations relating to dogs in Awabakal and Glenrock
Enhance and protect Dudley's biodiversity by controlling the feral population of Indian Mynas	<ul style="list-style-type: none"> • Significant reduction in Indian Myna population, native species flourish
Engage with NPWS to promote enforcement regarding trucks and trailbikes	<ul style="list-style-type: none"> • Decreased trailbike, truck activity reduces impact on vegetation
Engage with Council and other land managers to ensure land zonings are consistent with adjacent nature reserves such as environmental living zones to facilitate our unique Dudley 'bush and beach' lifestyle while protecting our bush land reserves	<ul style="list-style-type: none"> • Ecosystem values are protected



Angophora costata



Dudley rock platform



Sustainable Neighbourhood Workshop, March 2011

6.12 Bushfire Management / Preparing for Bushfire

AIMS:

- Protect life and property;
- Protect biodiversity in bushland reserves; and
- Community preparedness and education.

Actions	Outcomes
Improve management of fire trails and backburning regime: <ul style="list-style-type: none"> • Engage with NPWS about fire trail management and improving fire trails in Awabakal • Engage with NPWS to give residents' perspective regarding fire management planning • Engage with Rural Fire Service regarding management of burn offs 	<ul style="list-style-type: none"> • Community is protected from bushfire risk to persons and property
Community education campaign about <ul style="list-style-type: none"> • Impacts of fire on biodiversity / changes in vegetation • Bushfire preparedness and site assessments 	<ul style="list-style-type: none"> • Community is active in their own protection from bushfire risk and safely prepared for bushfire event
Explore opportunities to coordinate with Redhead residents. Redhead vegetation management plan will include fire considerations: to protect biodiversity, property and life / potential to use fire as a management tool (partnership with Landcare)	<ul style="list-style-type: none"> • Broader and local community is connected and integrated

Theme 4: Sustainable Living

Objective: Reduce Dudley's energy use, water use and waste

6.13 Ban the Bag Campaign

AIM: Encourage Dudley residents to reduce their consumption of single use, disposable plastic.

Actions	Outcomes
Encourage local businesses in Dudley to stop providing free plastic bags.	<ul style="list-style-type: none"> • Less plastic is produced. Plastic bags are not a pollutant in marine ecosystems
Encourage Dudley residents to join the NSW plastic free campaign	<ul style="list-style-type: none"> • Dudley residents are informed campaigners for a plastic-free lifestyle
Organise local screening and school tour of 'Bag It' movie	<ul style="list-style-type: none"> • Dudley residents are informed about the detrimental effects to the earth from plastic



Mountain Devil
Lambertia formosa



Planting natives



View north from
Dudley bluff

6.14 Reduce Household Waste

AIM: Generate less waste from every household, including by:

- Buying items with less packaging;
- Composting more;
- Recycling more; and
- Not using plastic bags.

Actions	Outcomes
Send compost to community garden / worm farm.	<ul style="list-style-type: none"> • Less compostable waste is sent to landfill • A free natural soil enrichment product is produced
Involve schools, preschools, pubs, businesses in recycling and reuse	<ul style="list-style-type: none"> • Local organisations generate less waste
Use of clean recycled items in school, preschool activities	<ul style="list-style-type: none"> • Preschools and schools reuse waste materials as craft supplies

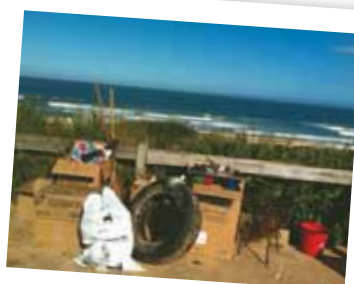
6.15 Reduce energy usage in Dudley / Increase uptake of renewable energy sources

AIMS: Lower household power bills, implement shared infrastructure (eg street lights) powered by renewable energy sources.

Actions	Outcomes
<ul style="list-style-type: none"> • Raise community awareness and level of knowledge on what is possible • Action group to collect info and work out how to make it applicable to each house 	<ul style="list-style-type: none"> • Community is well-informed of best options for reducing energy consumption and harnessing renewable power sources
<ul style="list-style-type: none"> • Increase installation of solar panels (household). For example through local bulk buying project 	<ul style="list-style-type: none"> • Combined buying power of residents secures cost-effective solar panel installation to majority of households in Dudley • Residents save significantly on energy bill costs
<ul style="list-style-type: none"> • Increase wind power where possible 	<ul style="list-style-type: none"> • Wind power supplies energy to community assets/facilities and houses
<ul style="list-style-type: none"> • Community shared energy resources 	<ul style="list-style-type: none"> • Community cohesion and support
<ul style="list-style-type: none"> • Community renewable energy project eg wind power to run sports field lights 	<ul style="list-style-type: none"> • Integrated partnerships • Renewable energy becomes the main energy source for Dudley
<ul style="list-style-type: none"> • Solar village and natural gas cooperative 	<ul style="list-style-type: none"> • Solar power supplies energy to community assets / facilities and houses



'Bag It' film screening



Clean Up Day at Dudley Beach



Sustainable Neighbourhood Workshop, March 2011

6.16 Reduce potable water use

AIM: Increase capture and reuse of rainwater and grey water.

Actions	Outcomes
Understand rebates	• Community is informed and motivated to utilise existing rebates for rainwater tank purchase
Workshops	• Community is educated on rainwater tank use and maintenance

Future Project Ideas to Pursue		
Coordinate organic veggie box pickup amongst Dudley residents eg Beanstalk, Go Organic	• Assist Dudley residents to source local, organic fresh food and other goods	6.14
Consider potential uses for old tip site (Off Redhead Rd)	• Secure land for community use and enjoyment	6.1
Historic Well site	• Preserve historic well site in Dudley	6.1
Underground Power	• Secure underground power lines in Dudley	6.1
After School Care	• Secure local after school care	



Supported by Lake Macquarie City Council and the NSW Government through its Environmental Trust

