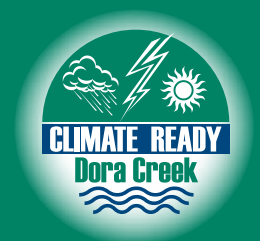
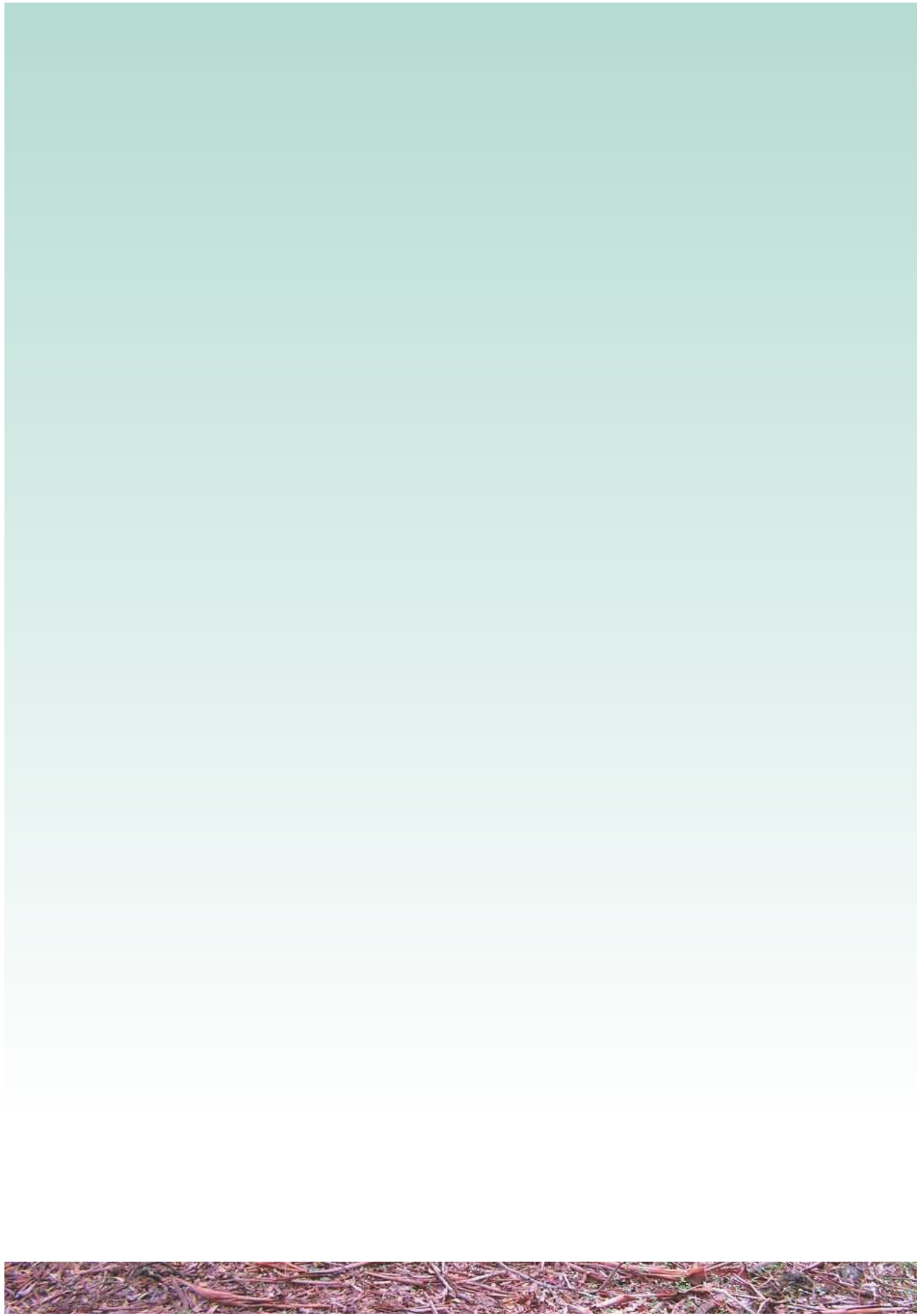




Priority Actions 2010-2012

Sustainable Neighbourhood Action Plan





Contents

The Sustainable Neighbourhoods Program.....1

Climate Ready Dora Creek Vision1

About the Plan2

Progress So Far.....2

Dora Creek Sustainable Neighbourhood Area.....3

Dora Creek Sustainable Neighbourhood Map4

Dora Creek Sustainable Neighbourhood Action Plan5

Contact Details7



The Sustainable Neighbourhoods Program

Reducing our ecological footprint neighbourhood by neighbourhood

Lake Macquarie City Council is committed to caring for the local environment and making a fair contribution to a happy, sustainable planet. The Sustainable Neighbourhoods Program is a bottom up approach that enables communities to develop their own neighbourhood sustainability action plan, and implement actions that reduce their neighbourhood footprint, and increase their neighbourhood wellbeing.

Dora Creek was the first community in Lake Macquarie City to get involved in the program. In September 2008, Council and the Dora Creek Catchment Group joined forces to organise a community workshop on adapting to climate change. At the workshop, about 50 community members and Council staff agreed to initiate the *Dora Creek Climate Change Adaptation Plan*. Workshop participants contributed local issues and action ideas, and agreed to set up a neighbourhood group, *Climate Ready Dora Creek*, to continue to develop and implement the plan.

The early work of the Dora Creek community and *Climate Ready Dora Creek* provided the foundations for the development of the Sustainable Neighbourhoods Program.

Climate Ready Dora Creek Vision

To foster a local community that can live sustainably and adapt to climate change

The residents of Dora Creek are committed to achieving this vision through the implementation of this Sustainable Neighbourhood Action Plan (SNAP). Beyond their own actions, the group has also pledged to build partnerships with other organisations to take action on climate change to help the community prepare and adapt.



**“The
community
working with
all levels of
government
and agencies
to adapt to
and prepare
for climate
change”**



The Sustainable Neighbourhood Action Plan

The Dora Creek Sustainable Neighbourhood Action Plan (SNAP) documents the **priority community-based actions** from the *Draft Dora Creek Climate Change Adaption Plan*.

The actions generated from the September 2008 workshop and contained within the *Draft Dora Creek Climate Change Adaptation Plan* were prioritised by participating residents of Dora Creek. Climate Ready Dora Creek will work with the community and agencies, including Council, to implement the action plan over the coming years.

The plan belongs to the Dora Creek community and is a living document. It will improve and grow as decided by the community in light of changing knowledge and experience. Climate Ready Dora Creek is committed to monitoring and reviewing the plan annually.

The remaining actions (those with lower priority) within the *Draft Dora Creek Climate Change Adaptation Plan* will be periodically reviewed and pursued as opportunities arise.

Progress So Far

The group has already taken major steps forward

- Volunteer Neighbourhood Coordinators have been established in the following precincts of Dora Creek:
 - Stingaree Point Drive
 - Dora Street (west)
 - Dora Street (east)
 - The Village
 - Kalang Road
 - Baker Street
 - Newport/Gradwells/Coorumbung Road area
- Three neighbourhood newsletters have been produced and distributed
- Emergency Ready Workshop held
- Impacts of Climate Change on Insurance Workshop held
- Improved local emergency procedures (eg Baker St flood evacuation contacts and keys) developed
- Successful Environmental Education Grant bid to work with Dora Creek Public School in 2010/11.



The completion of the Dora Creek SNAP will support and guide the community towards its vision in the coming years.



Dora Creek Sustainable Neighbourhood Area

Dora Creek is located on the western shores of Lake Macquarie, north of Morisset. It is a unique community, bordered on two sides by water, with Bonnells Bay on one side and Lake Eraring on the other, and divided by Dora Creek.

Dora Creek's close proximity to the water is the area's renowned feature and natural asset, however it also presents some inherent challenges for the neighbourhood to adapt to climate change. Water levels in Lake Macquarie are predicted to rise at the same rate as the ocean. The predicted increases of 0.91 metres by 2100 will mean some land areas of Dora Creek will be permanently inundated or at increased risk of flooding. Floods may occur more frequently due to an increase in the frequency and intensity of storms. In response to growing concern, Climate Ready Dora Creek, together as a community, developed actions to better understand, plan for, and adapt to climate change in Dora Creek. Council is committed to working with local communities to respond to this challenge.

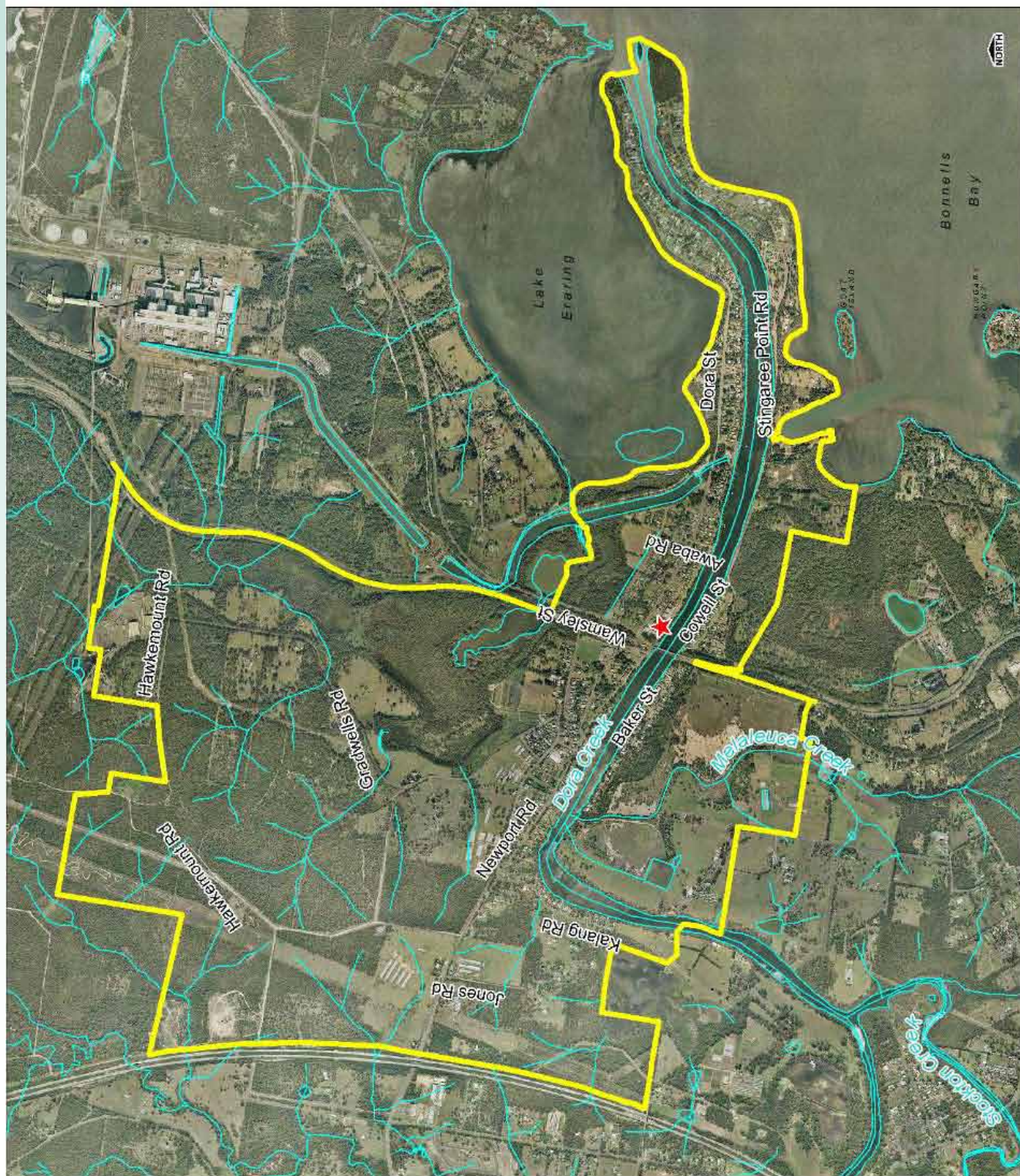
About Dora Creek

Information from the Census 2006

| | | | | | |
|-----------------------------------|------------|----------------|--------------------------------|------------|----------------|
| Population | 1,315 | | | | |
| Ancestry | Dora Creek | Lake Macquarie | Age Distribution | Dora Creek | Lake Macquarie |
| Indigenous | 2.7% | 2.3% | 0-19 years | 24.3% | 26.6% |
| | | | 20-34 years | 14.5% | 16.2% |
| | | | 35-55 years | 27.1% | 27.9% |
| Australian born | 80.9% | 85.4% | 55-74 years | 25.4% | 21.1% |
| | | | 75 years plus | 8.6% | 8.2% |
| Selected Medians | Dora Creek | Lake Macquarie | Households Persons | Dora Creek | Lake Macquarie |
| Age | 44 years | 40 years | No of households | 490 | 67,442 |
| Weekly household income | \$810 | \$922 | One person household | 24.7% | 23% |
| Monthly mortgage | \$1,227 | \$1,300 | Two person household | 37.3% | 35.5% |
| Monthly rent | \$882 | \$832 | Fully owned | 45.2% | 38.6% |
| Household Size | 2.4 | 2.6 | Being purchased | 28.5% | 33.4% |
| Unemployment | 7.1 | 6.7 | Renting | 18.1% | 21.2% |
| Street address 1 year ago | 78.3% | 84.2% | Couple family with child | 37.8% | 43.6% |
| Street address 5 years ago | 58.6% | 62.0% | Couple family no child | 44.5% | 38.4% |
| Education | Dora Creek | Lake Macquarie | One parent household | 16.9% | 16.8% |
| Years 11/12 | 30.1% | 36.4% | Volunteers | Dora Creek | Lake Macquarie |
| Post school qualifications | 49.9% | 51.7% | Volunteers | 19.0% | 17.0% |
| Labour Force | Dora Creek | Lake Macquarie | Need Assistance with Self Care | Dora Creek | Lake Macquarie |
| Over 15 years of age in workforce | 46.6% | 55.8% | Need Assistance with Self Care | 4.9% | 5.4% |
| Internet | Dora Creek | Lake Macquarie | | | |
| Connected to the internet | 51.1% | 57.1% | | | |

Note: Includes Australian Bureau of Statistics Census data collection districts 1120303, 1121310 and 1120511. Excludes collection district 1120515 as it encompasses a large area outside of the Dora Creek Sustainable Neighbourhood boundary.





Climate Ready Dora Creek (CRDC) Sustainable Neighbourhood Action Plan

Objective 1: Increase community resilience to flooding through improved stormwater drainage and floodway management

| Action | Resources | Measures |
|---|--|---|
| 1.1 Review and document stormwater drains to better understand local drainage issues | CRDC Coordinators, maps | <ul style="list-style-type: none"> Local drainage inventory complete |
| 1.2 Improve process to tackle drainage trouble areas (in conjunction with responsible organisation ie Council) to regularly clear flood drains of trees and rubbish | Council, Civilake, Landcare, Dora Creek volunteers | <ul style="list-style-type: none"> Meeting held with Asset Management Submission of drainage inventory to Council Response received from Council |
| 1.3 Encourage Council to review dredging silted areas of local waterways | Council, technical specialists | <ul style="list-style-type: none"> Submission made to Council Response received from Council |
| 1.4 Encourage Council to review/establish management regimes for local floodways | Council | <ul style="list-style-type: none"> Request made to Council Response received from Council |

Objective 2: Improve emergency planning and readiness within the Dora Creek community

| Action | Resources | Measures |
|--|--|--|
| 2.1 Support emergency service providers in planning and procedures for Dora Creek. Conduct a community workshop to help to review, design and/or promote routes and procedures to be fail safe for all eventualities (flood, wind, fire) | State Emergency Service (SES), Rural Fire Service (RFS), newsletter, workshop, grants, Council | <ul style="list-style-type: none"> Newsletter article completed Workshop held Hold an annual meeting with SES |
| 2.2 Explore the establishment of a community network to support the elderly and less able community members, including a team of volunteers to help elderly people | Council, Community & Health Services, SES, grants, newsletter, community volunteers | <ul style="list-style-type: none"> Research of current situation completed Establish a register of local people in need (pending privacy issues) Volunteers identified in locality Establish or support an Emergency Response system |
| 2.3 Strengthen flood warning system and regular testing program | Council, SES, Kalang Rd residents | <ul style="list-style-type: none"> Make a request to Council that regular testing is carried out for Kalang Road Information published in newsletter |
| 2.4 Establish a permanent flood evacuation road and procedure for Baker Street and promote to local residents | Council, SES, Baker St residents | <ul style="list-style-type: none"> Consolidated key system in place Keys provided to community representatives Information published in newsletter |



Objective 3: Explore opportunities to protect and maintain our natural environment

| Action | Resources | Measures |
|--|-----------------------------------|--|
| 3.1 Promote effective property storm and flood water management, by checking landscape features such as stone or sleeper barriers that may impede or increase the velocity of the flow of stormwater across a property | Workshop, newsletter, site visits | <ul style="list-style-type: none"> Information provided to property owners Newsletter article completed |
| 3.2 Replant cleared land areas to restore habitat, prevent erosion, and protect against sea-level rise | Landcare, grant | <ul style="list-style-type: none"> List of priority sites Number of sites planted & maintained |
| 3.3 Liaise with or establish a local Waterwatch group to monitor and maintain creek water quality | Council, schools, Waterwatch kit | <ul style="list-style-type: none"> Number of volunteers trained Priority Waterwatch sites established Volunteers collect and submit Waterwatch data |
| 3.4 Establish Landcare volunteers for revegetation and maintenance activities | Landcare, newsletter, posters | <ul style="list-style-type: none"> Number of volunteers trained |

Objective 4: Work directly with the community to raise awareness of, and involvement in climate change

| Action | Resources | Measures |
|--|---|---|
| 4.1 Produce a Climate Ready Dora Creek newsletter | Council, volunteers for letterbox drop | <ul style="list-style-type: none"> Number of newsletters Number of recipients |
| 4.2 Hold regular general meetings of Climate Ready Dora Creek | Volunteer hosts, Council, guest speakers, technical experts | <ul style="list-style-type: none"> Number of meetings Attendance at meetings Meeting minutes and actions distributed |
| 4.3 Host and/or organise community awareness raising workshops or events each year | Grants, local venue, guest speakers, partner organisations, Council | <ul style="list-style-type: none"> Number of events Attendance at events |
| 4.4 Involve local community groups (eg Probus, Rotary, local churches, and clubs) in flood awareness and climate change activities | Grant, newsletter, invitation to other groups, guest speakers | <ul style="list-style-type: none"> CRDC guest attendance at meetings Send newsletter to local community organisations |
| 4.5 Engage local school/s in flood awareness and climate change activities | Grant, newsletter, other organisations, Council | <ul style="list-style-type: none"> Hold meeting with Dora Creek School Grant application submitted Grant funds received Number of students involved Project report submitted |



Climate Ready Dora Creek Sustainable Neighbourhood Action Plan

Objective 5: Reduce our individual and neighbourhood footprint by living sustainably

| Action | Resources | Measures |
|--|-----------------------------|---|
| 5.1 Promote sustainable options for local transport and the increased use of bicycles and electric hybrid/alternative fuels for buses, trains, and private vehicles, as opportunity arises | Grants, newsletter | <ul style="list-style-type: none">• Lodge an Expression of Interest (EOI) for a bicycle rack• Include an article in newsletter |
| 5.2 Take opportunities to promote sustainable behaviour such as reduced resource consumption and waste generation (eg worm farming, composting, native gardening, water and energy saving) | Council, grants, newsletter | <ul style="list-style-type: none">• Host a workshop• Complete a newsletter article |

Objective 6: Influence external planning processes to help Dora Creek prepare for, and adapt to climate change

| Action | Resources | Measures |
|---|---|--|
| 6.1 Influence the revision of planning and development guidelines, (including extensions), to consider house-raising, planned retreat, cumulative impacts of filling, and other climate change management options | Council, technical papers and expertise, workshops and seminars | <ul style="list-style-type: none">• Review and comment on Council planning and policy |
| 6.2 Help coordinate community resources and support to ensure quick emergency response, clean up, and to help people return to damaged homes | SES, Council, volunteers, other community organisations | <ul style="list-style-type: none">• Meet with key community organisations• Document the support networks and procedures for Dora Creek |
| 6.3 Nominate a representative for the LMCC Flood Plain Management Committee | Community volunteer, Council | <ul style="list-style-type: none">• Nominate a CRDC representative on committee |
| 6.4 Influence a review of the Dora Creek Flood Plain Management Plan to include sea-level rise and other climate change features | Council | <ul style="list-style-type: none">• Make a request to Council that it review the management plan with related inclusions.• Response received from Council |

Contact Us - Climate Ready Dora Creek

To find out more or get involved please contact:

Climate Ready Dora Creek Coordinator

Laurene Mulcahy
laurenemulcahy@y7mail.com
Ph: 4973 6465

Sustainable Neighbourhoods Program

Kerry Jack kjack@lakemac.nsw.gov.au or
Rachel Honnef rhonnef@lakemac.nsw.gov.au
Ph: 4921 0495

Climate Ready Dora Creek Meetings

Meetings are held on the third Wednesday evening of every second month from 5.30pm to 7.00pm. Community members are welcome to attend. Contact Laurene Mulcahy at laurenemulcahy@y7mail.com or 4973 6465 to confirm the next meeting time and location.





